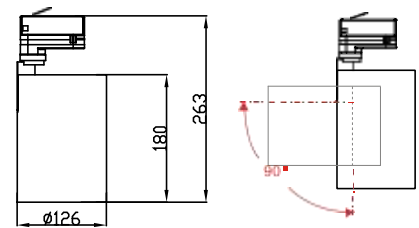


iTrack Pro Series

TL11-30W

Reflector



Technical Parameters:

| Name | Parameters |
|------------------------|--------------------|
| Light source: | COB |
| Input Voltage: | AC220~240V 50/60Hz |
| LED Current: | 700mA, 35-37V |
| Rated life: | >50,000 hours |
| Operating temperature: | -20°C~40°C |
| Storage temperature: | -30°C~60°C |
| Certificate: | TUV/CE/RoHS |
| Weight: | 1.75KG |

Ordering Information:

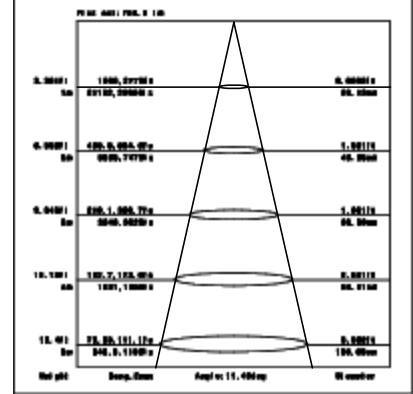
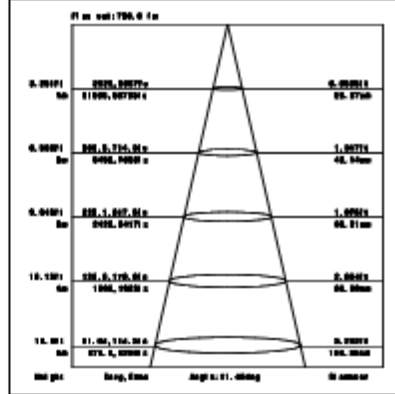
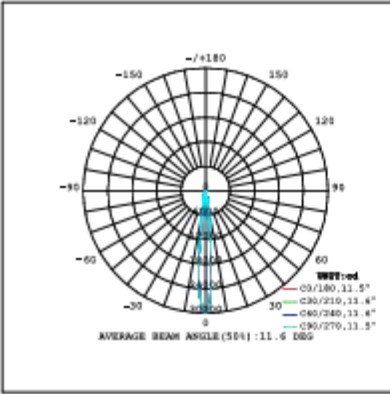
○ White ● Black

| Power | CRI | Beam Angle | Luminous | CCT | Housing | Part Number | | |
|-------|-----|------------|----------|---------|--------------------|--------------------|--------------------|--------------------|
| 30W | >80 | ▲ 12° | 2830 lm | 3000K | ○ | TL114-30W-830-W-12 | | |
| | | | | | ● | TL114-30W-830-B-12 | | |
| | | | 3030 lm | 4000K | ○ | TL114-30W-840-W-12 | | |
| | | | | | ● | TL114-30W-840-B-12 | | |
| | | | ▲ 20° | 2860 lm | 3000K | ○ | TL114-30W-830-W-20 | |
| | | | | | | ● | TL114-30W-830-B-20 | |
| | | 3050 lm | 4000K | ○ | TL114-30W-840-W-20 | | | |
| | | | | ● | TL114-30W-840-B-20 | | | |
| | | ▲ 45° | 2740 lm | 3000K | ○ | TL114-30W-830-W-45 | | |
| | | | | | ● | TL114-30W-830-B-45 | | |
| | | 2920 lm | 4000K | ○ | TL114-30W-840-W-45 | | | |
| | | | | ● | TL114-30W-840-B-45 | | | |
| | | >90 | ▲ 12° | 2590 lm | 3000K | ○ | TL114-30W-930-W-12 | |
| | | | | | | ● | TL114-30W-930-B-12 | |
| | | | | 2690 lm | 4000K | ○ | TL114-30W-940-W-12 | |
| | | | | | | ● | TL114-30W-940-B-12 | |
| | | | | ▲ 20° | 2600 lm | 3000K | ○ | TL114-30W-930-W-20 |
| | | | | | | | ● | TL114-30W-930-B-20 |
| | | 2720 lm | 4000K | ○ | TL114-30W-940-W-20 | | | |
| | | | | ● | TL114-30W-940-B-20 | | | |
| | | ▲ 45° | 2480 lm | 3000K | ○ | TL114-30W-930-W-45 | | |
| | | | | | ● | TL114-30W-930-B-45 | | |
| | | 2600 lm | 4000K | ○ | TL114-30W-940-W-45 | | | |
| | | | | ● | TL114-30W-940-B-45 | | | |

CRI90 12°

3000K

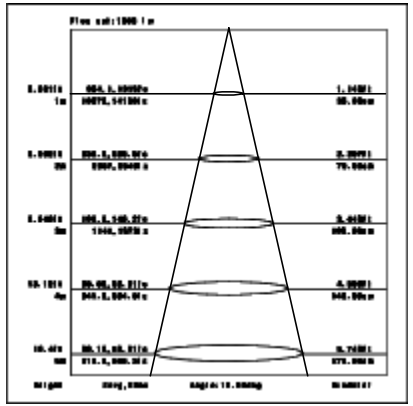
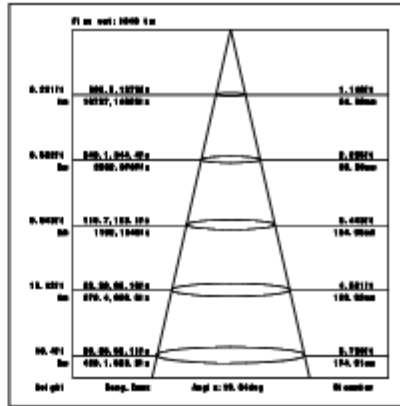
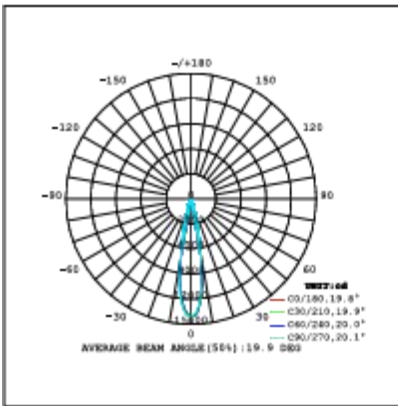
4000K



CRI90 20°

3000K

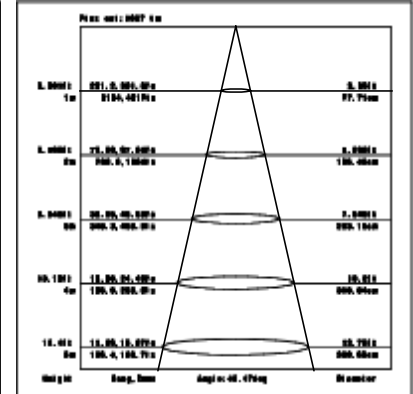
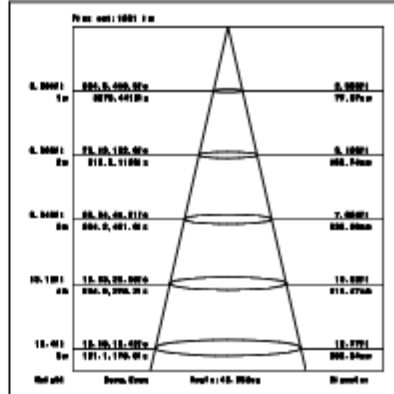
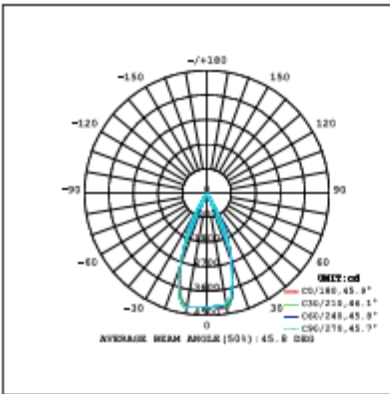
4000K



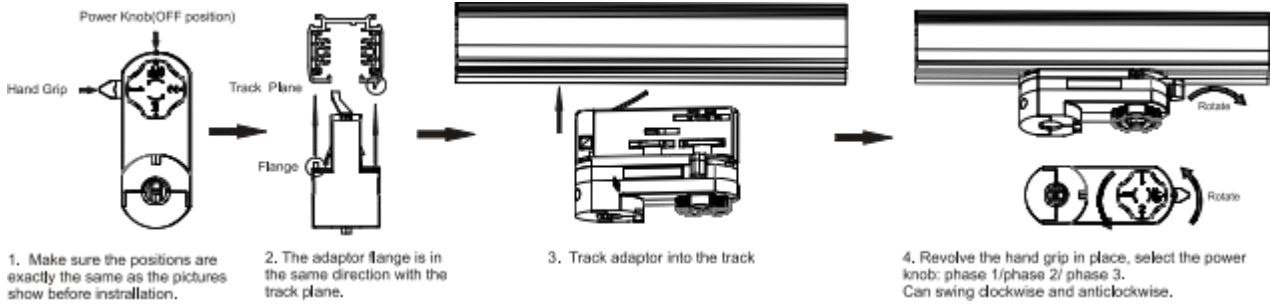
CRI90 45°

3000K

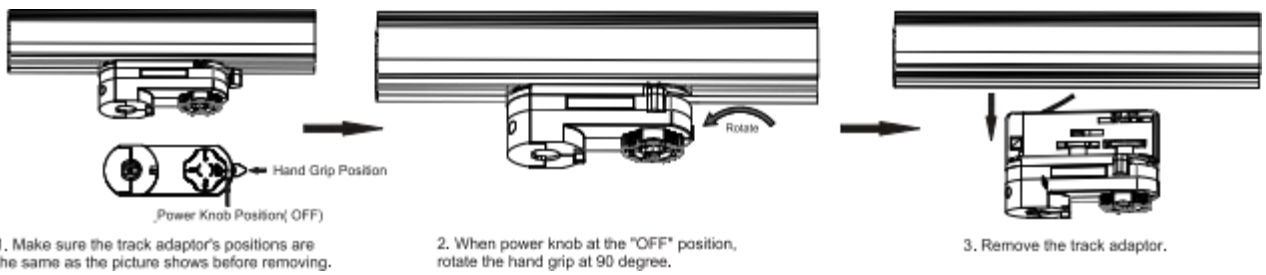
4000K



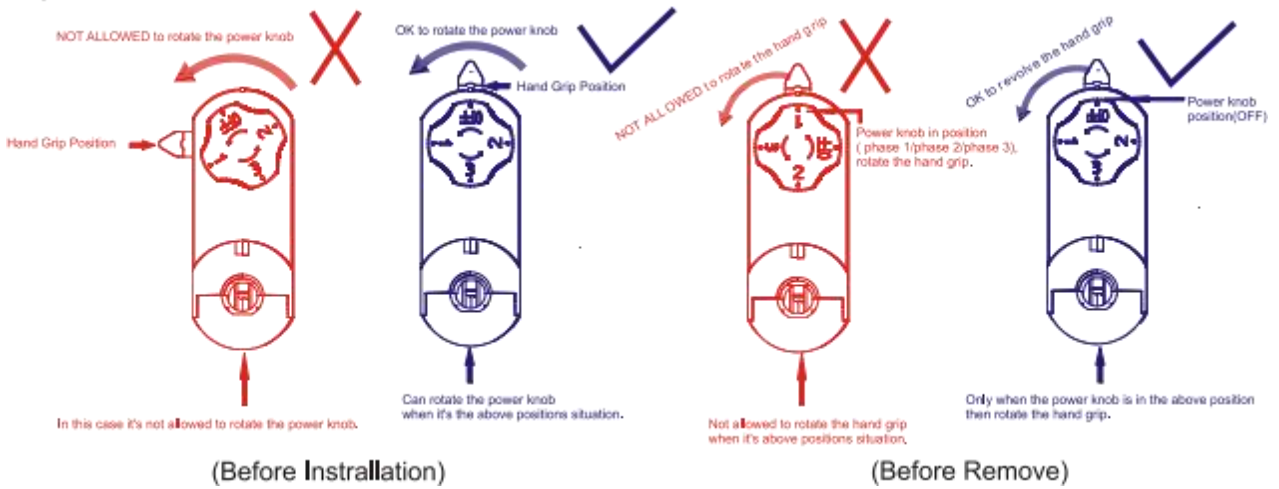
Installation instruction



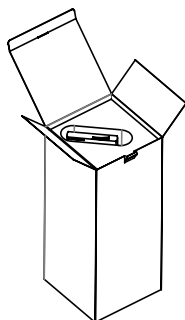
Remove Instructions



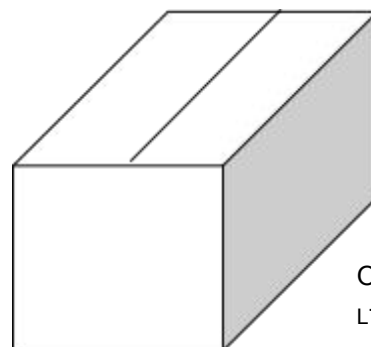
Cautions



Packaging:



Box
L140*W140*H340mm
1pc/box
GW: 2.0kg/box



Outer carton
L720xW310xH370mm
10 pcs/CTN
GW: 21.5kg/carton

Product naming system

TL (X) XXX (H) - XW - X XX - X- XX

